

5 21 24 27  
IN 2 POSITIONS

15  
IN 17 POSITIONS

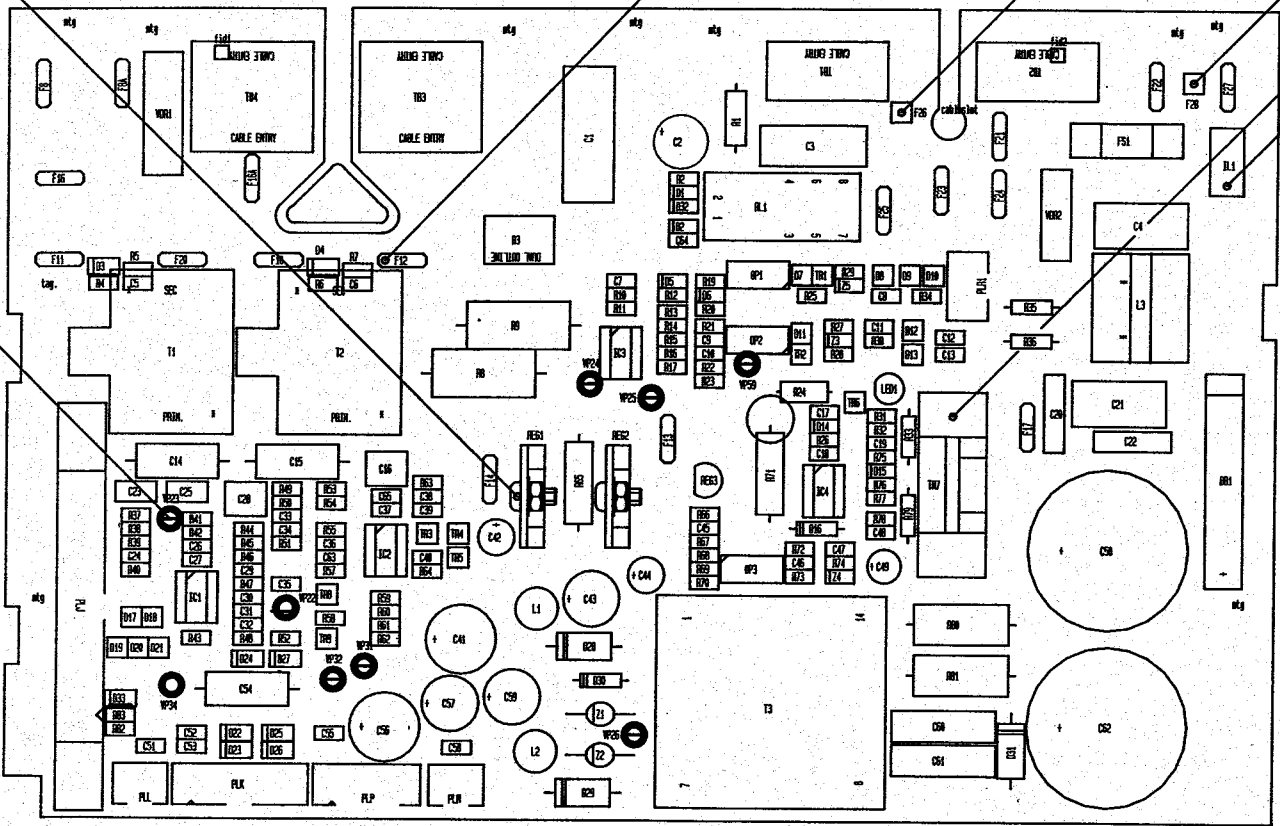
8

9

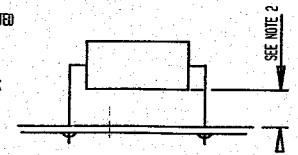
1 2

30  
2 FITTED ON EACH

16  
IN 9 POSITIONS



NOTE:-  
 1. C50 AND B33 ARE NOT TO BE FITTED  
 2. R8, R9, R80, R81 TO HAVE 7mm MIN. BETWEEN COMPONENT BODY AND BOARD SURFACE  
 3. SEE SH22 FOR WIRE LINK DETAIL.



DATE 23.10.94  
 3.2.94

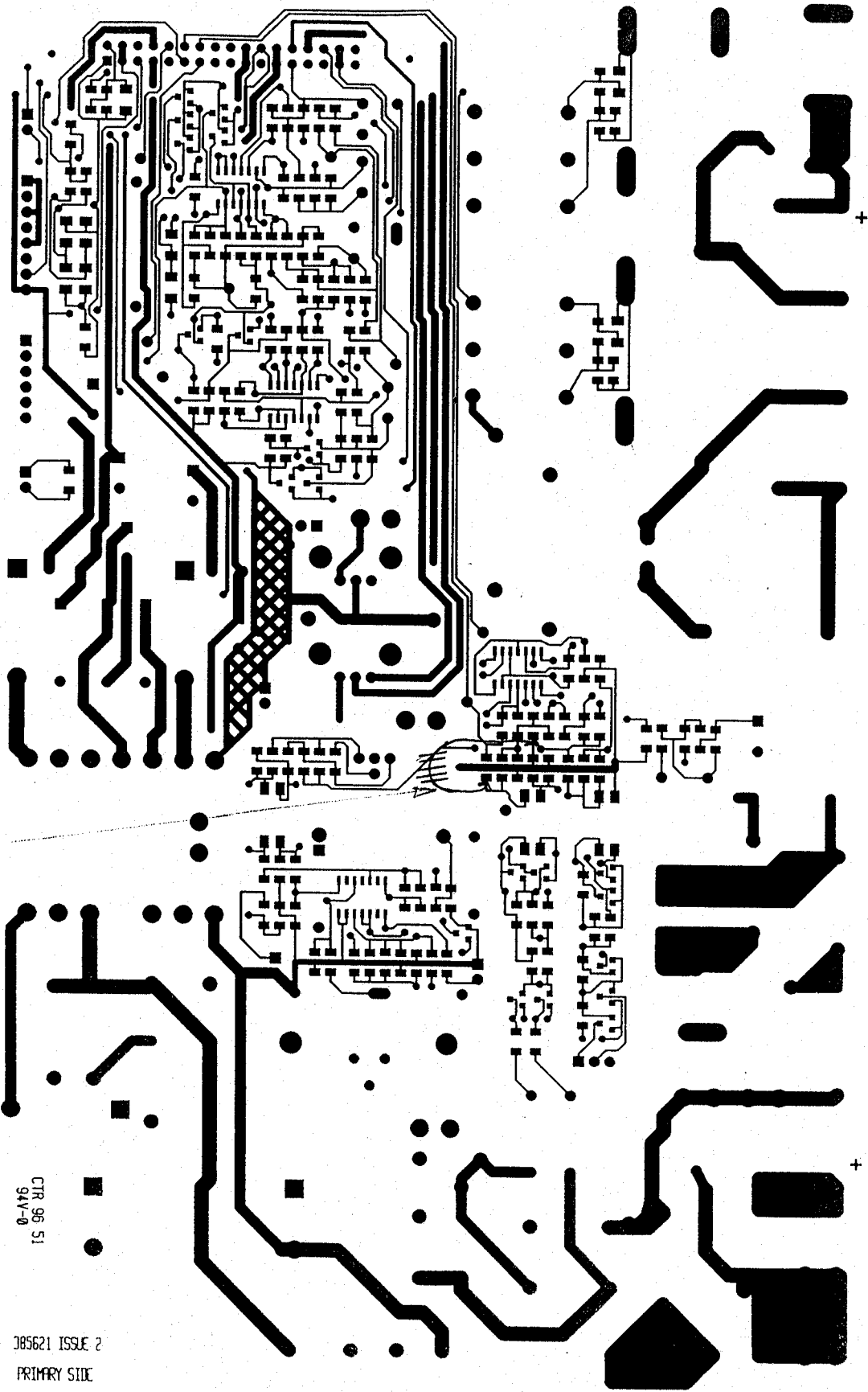
NAME E.J.T.  
 CHECKED [Signature]

MATERIAL  
 FINISH

DIMS. IN DIM. APPLY OVER FINISH  
 EXCEPT FOR PLY AND LACQUER  
 GENERAL 2. = V-4.4  
 TOLERANCE 2.1 = V-4.2  
 2.2 = V-4.1

ASSEMBLER NO 594  
 SCALE 2:1

TITLE POWER BOARD P.C.B ASSY. (594)  
 EURO THERM DRIVES Ltd.  
 AH 305621F  
 SHEET 1 OF 2




SEE NOTE

CTR 96 51  
94V-0

385621 ISSUE 2  
PRIMARY SIDE

NOTE: WIRE LINK TO BE SECURED WITH ADHESIVE (EA385449) AS INDICATED.

THIS IS A MASTER DOCUMENT DO NOT REMOVE FROM FILE			
 EUROTHERM DRIVES	Drawn	Checked	Title
	CS	<i>[Signature]</i>	POWER BOARD PCB ASSY (594)
	Issue	Date	Drawing No.
	7 <sup>m</sup>	3.2.97	AH 385621
			Sht 2 of 2 Shts