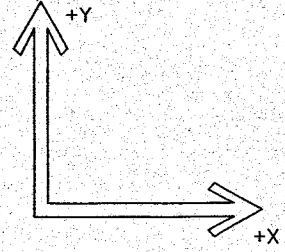
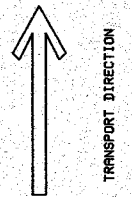
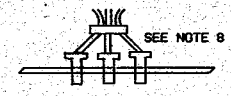
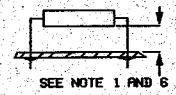


NOTES

1. R3,R4 AND R20 TO HAVE 7 MIN BETWEEN COMPONENT AND BOARD SURFACE
2. GATE LEAD COLOUR  
BASE CONNECTIONS RED WIRE BX,BU,BY,BV,BZ,BW  
EMITTER CONNECTIONS BLACK WIRE EX,EU,EY,EV,EZ,EW
3. ITEM 13 PROCEED AS FOLLOWS  
EX CONNECTED TO EY1  
EY CONNECTED TO EZ1
4. R38,LED1,LED2,LED3,CON4,R52,R53 ARE NOT TO BE FITTED
5. IF R16,R17,R52 AND R53 ARE FITTED  
R18,R19,R50 AND R51 ARE NOT TO BE FITTED
6. R1 AND R5 TO HAVE 4 MIN BETWEEN COMPONENT BODY AND BOARD SURFACE
7. WHEN BUILDING 1.5KW VERSION R4 WILL BE THE SAME SIZE AS R3
8. GATE LEAD WIRES GROUPED CLOSE TO PCB WITH TIE WRAPS AS FOLLOWS :-  
(EW,BW) (EZ,BZ,EZ1) (EY,BY,EY1)  
(EU,BU) (EX,BX,LINK) (EV,BV)
9. FIT INSULATOR BETWEEN SPACER AND UNDERSIDE OF TRANSFORMER ON INRUSH LIMITER SIDE. THEN FORM UP AS SHOWN

BUILD	R3	R4	
0.75KW	0.068	0.47	C1 NOT FITTED
1.5KW	0.068	0.068	C1 FITTED



THIS IS A CAD MASTER DO NOT HAND MODIFY - REPLOT ONLY A1X2.PDF

ISS	DATE
1	07.91
2	24.7.91
3	24.8.91
4	19.5.93
5	3.11.93
6	27.1.97
7	31.7.97
8	26.11.97
9	26.9.98

FORM RDL/CR  
DRAWN *ADP*

DIMENSIONS IN mm APPLY OVER FINISH  
GENERAL TOLERANCE I --0.1  
                          II --0.2  
                          III --0.1  
HOLES < 2mm 0.1 -0.02 -0.07

5831  
SCALE 2:1  
EUROTHERM DRIVES LTD

© 1997 EUROTHERM DRIVES LTD  
TITLE 5831 POWER BOARD PCB ASSEMBLY  
RH059533F 1/1