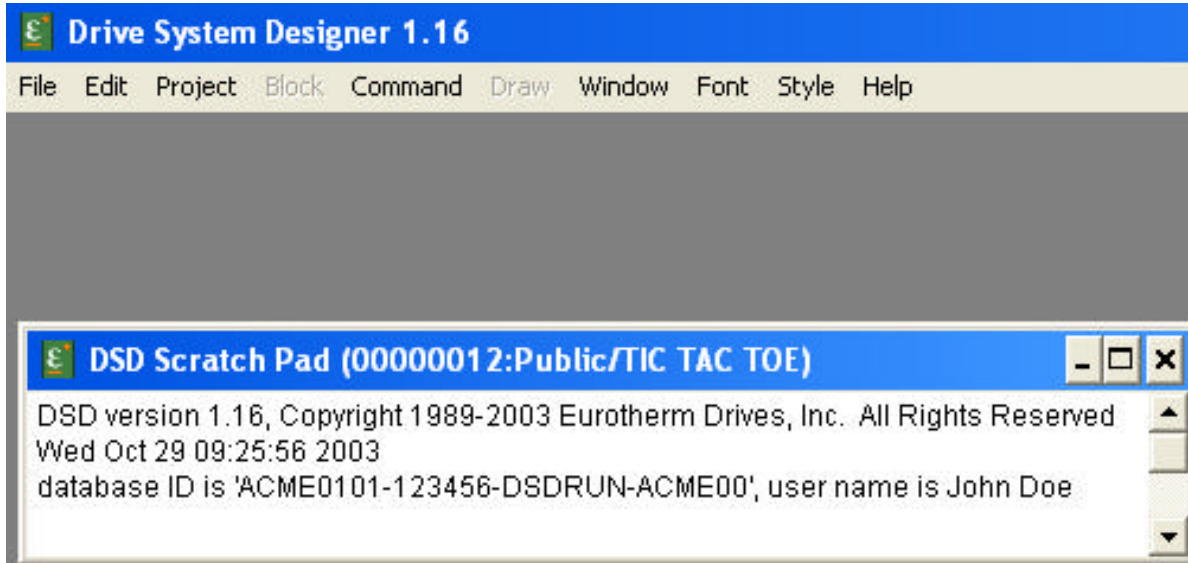


## Objective

To locate the *'database ID'* of the Eurotherm Link software DSD.

Launch the Link software DSD or Manager as shown below.



The *'database ID'* is located in the DSD Scratch Pad as shown above.

In this case the *'database ID'* is: **ACME0101-123456-DSDRUN-ACME00**

If you have questions, please call the Product Support Group at (704) 588-3246.